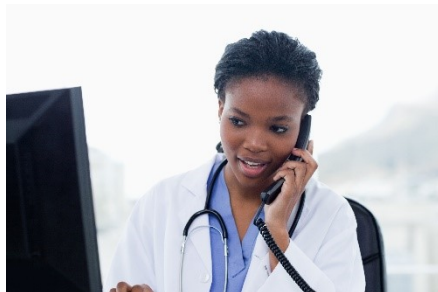




On March 11, 2021 it Might Be Your Turn to Sign up for a COVID-19 Vaccine

If you have any of these health conditions you can start signing up to get a vaccine on March 11th.

- **Down syndrome**
- **Type 1 and Type 2 Diabetes**
- People with Intellectual Disabilities who have an **IQ of 70 or below**.
This is only some people with an intellectual disability. If you get developmental services or you were in special education your IQ score is on your records.
- **Current cancer** - any kind of cancer you have now
- **Pregnancy**



Ask your doctor if you think you might have any of these health conditions. If you get services ask your case manager or the nurse at your agency.

- **Severe obesity** – is anyone more than 100 pounds overweight.
Doctors use a chart to find out if you have severe obesity. It is called Body Mass Index, or BMI. Ask your healthcare provider if your BMI is 40 or above.

- **COPD** - Chronic Obstructive Pulmonary Disease including emphysema and chronic bronchitis. These lung diseases make it hard to breath.
- **Chronic kidney disease** – Your kidneys are an important organ in your body that makes urine. Kidneys remove waste and water from your blood.
- **Heart disease** – for example if you had a heart attack or heart failure. The list only includes serious heart problems. It does NOT include high blood pressure.
- **Immunocompromised** – a weakened immune system. The part of your body that fights off viruses and infections is not working well. This might be due to:
 - organ transplant
 - blood, or bone marrow transplant
 - or HIV
- Other **Chromosomal disorders** including:
 - Angelman syndrome
 - Prader-Willi syndrome
 - Fragile X syndrome
 - Cri-du-chat syndrome



- Disabilities that have a bad effect on your lungs. For example, muscular dystrophy, spina bifida, and multiple sclerosis. These conditions might make it hard to breathe.
- **Sickle cell disease**

[Click here for more information about vaccines or call 855-722-7878](#)